

# RADIO BROADCASTING NEWS

An illustration at the top of the page shows two radio towers on either side, connected by a network of power lines. Below the towers are small buildings and trees, suggesting a radio station complex.

Vol. 2

NOVEMBER 18, 1922

No. 25



The Cecilia Choir of the Western Theological Seminary, Pittsburgh, Pa., which recently gave a delightful program from KDKA  
Insert: Charles N. Boyd, director.

**\$13<sup>60</sup>—That's All—for a Real**



**STORAGE BATTERY**  
**Willard**

**Radio "A" Battery**

Why suffer from the frying, hissing, crackling noises that are due to poor batteries when you can buy a reliable Willard at such a low price?

This battery has a number of special features—and it's shipped dry and fully charged, so you know it's new when you get it.

The nearest Willard Service Station will show you this battery today.

WILLARD STORAGE BATTERY COMPANY, Cleveland, Ohio

**Made in Three Sizes**

Capacity and prices of this new battery—the Willard F W—are as follows: 40 a. h., \$13.60; 80 a. h., \$17.50; 110 a. h., \$22.00. Prices slightly higher west of the Mississippi and in extreme south.

**Radio Weather Is Here Again**

*Your Friends will appreciate Radio Broadcasting News.  
Tell them about it.*

**RADIO BROADCASTING NEWS,  
1205 Keenan Building, Pittsburgh, Pa.**

Please enter my subscription to RADIO BROADCASTING NEWS for which I am enclosing

**USE  
THIS  
FORM**

\$ ..... { cash  
money order  
check

Name

Street Address

City

State

**Subscription Price, \$1.00 a year—52 Issues.**

# RADIO BROADCASTING NEWS

*Published Weekly to increase interest and enjoyment in Radio Broadcasting*

Address all communications to

EDITOR, RADIO BROADCASTING NEWS, 1205 Keenan Building, Pittsburgh, Pa.

SUBSCRIPTION ONE DOLLAR PER YEAR

FIVE CENTS PER COPY

Vol. 2

November 18, 1922

No. 25

## Radio Broadcasting Extending Gospel

TO those who have feared that the broadcasting of church services would lessen regular church attendance we submit the following from PROGRESS, the regular publication of the East End Christian Church, Pittsburgh, one of the churches from which regular services are being sent out through station KDKA.

"When the bicycle was invented fearful souls predicted that church attendance would suffer, when the automobile appeared, these same timid people saw the churches emptied, when the radio began to project its messages thousands of miles, the pessimists were again disturbed and yet the churches were never filled as they are today. The radio carries the sermon to hundreds of sick and brings a word of cheer, the radio preaches to thousands of folks who pride themselves upon never going to church; the radio gets into the home of religious bigots who say: "Well, I declare I didn't know that other church was so good." In our humble judgment the radio is one more of God's ways of preaching the gospel and of breaking down denominational walls. He who invents and he who operates thus become God's servants, doing His will."

## Radio Broadcasting for Weddings

SOME time ago we read of a couple in New York State being married in the air, and having the complete service broadcasted to those on land who wished to hear.

A radio fan from the Hoosier state has written us of a radio wedding recently performed in that state for which the music for the bridal march was

furnished from the Press-Smith Broadcasting station at Muncie, Indiana. At the close of the ceremony the operator extended the good wishes of the station to the happy couple.

At the Pittsburgh Electrical Show which has just been held a Radio Wedding was one of the features. The ceremony was performed in a glass booth which was sound proof, and connected by telephone with the Westinghouse broadcasting station KDKA about ten miles away. From this station the wedding march was played by the KDKA orchestra and the complete marriage ceremony was broadcasted.

Loud speakers connected with receiving sets in Motor Square Garden, where the Electrical Show was held, gave every detail of the ceremony to the assembled crowd, who could see everything which happened within the booth, but could only hear after the sound had travelled to East Pittsburgh by telephone, and had returned by the wireless route.

The smiling couple who took part in the radio wedding were the recipients of many valuable wedding gifts from exhibitors at the Show, including practically everything necessary for the equipment of an electrical home.

## An Experiment in Courtesy

THAT radio fans in the Tri-Cities may have a chance to hear broadcasting stations from more distant cities, Station WOC, of the Palmer School of Chiropractic and Station WHAI, of the Radio Equipment and Manufacturing Co. both of Davenport, Iowa, have agreed on a "Silent Night" each week as an experiment. For the present these stations are not giving an evening program on Tuesdays.

**Programs for the Week**

**Pittsburg District**

**WESTINGHOUSE RADIO STATION KDKA**

**360 Meters East Pittsburgh, Pa.**

**Eastern Standard Time**

**Sunday, November 19, 1922**

- 10:45 A. M. Services of Emory Methodist Episcopal Church, North Highland Avenue at Rippey Street, Pittsburgh, Pa. Rev. W. Wofford T. Duncan, Minister.
- 2:45 P. M. Children's Bible Story, by Rev. W. A. Logan, Pastor, Alpha Lutheran Church, Turtle Creek, Pa.
- 3:00 P. M. Organ recital by Harvey B. Gaul, organist of the Calvary Episcopal Church, Pittsburgh, Pa., with Walter Brown, tenor, and Chester Knauss, baritone.  
Program: "Concert Overture" E'Evry; Three movements from "The Nut Cracker Suite" Tschaiakowsky, including Danse de la Fee Dragee, Danse Chinoise, and Danse des Mirlitons; "Aria from St. Paul" Mendelssohn, "Oh, God Have Mercy," by Mr. Knauss; "Serenade," Rachmaninoff; "Finale from Sixth Symphony," Tschaiakowsky; original compositions by Harvey B. Gaul "Chant for Dead Heroes," "From the Southland," and "La Brume;" tenor solo Aria from "By Faith Alone," "Lord I Am Not Worthy," by Walter Brown; "Wind and the Grass;" and "April Scherzo."
- 4:45 P. M. Vesper Services of the Shadyside Presbyterian Church, Amberson Avenue near Fifth Avenue, Pittsburgh, Pa. Rev. Hugh Thomson Kerr, D.D., Pastor.
- 7:30 P. M. Services of the East End Christian Church, Highland Avenue and Alder Street, Pittsburgh, Pa. Rev. John Ray Ewers, Pastor.

**Monday, November 20, 1922**

- 7:00 P. M. News. Weekly Survey of Business Conditions, prepared by the National Industrial Conference Board. Tri-Weekly Letter from Farm and Home. The Nast Group of Radio Articles No. 31.
- 7:30 P. M. Bedtime story for the children.
- 8:00 P. M. Special addresses by prominent business men.
- 8:30 P. M. Concert by KDKA Orchestra under the baton of Victor Saudek.  
Program: Overture, "Orpheus," Offenbach; Waltz, "Roses from the South," Strauss; Excerpt from the Red Mill, Herbert; "Lyric Pieces," Grieg; (a) "Shepherd Boy," and Grandma's Minuet;" "Fantasy, from "Carmen," Bizet.

**Tuesday, November 21, 1922**

- 7:00 P. M. News. Weekly Fashion Talk, of interest to women, prepared by The Joseph Horne Company, Pittsburgh, Pa. United States Semi-Weekly Public Health Bulletin.
- 7:30 P.M. Bedtime story for the children.
- 8:00 P. M. Special addresses by prominent business men.
- 8:30 P. M. Concert by the Lyric Quartet of Pittsburgh. The individual members of this un-

**Talented Young Pittsburger at KDKA**



Matthew Frey, accompanist and pianist; composer of "The Violin Maker of Cremona," an opera in one act.

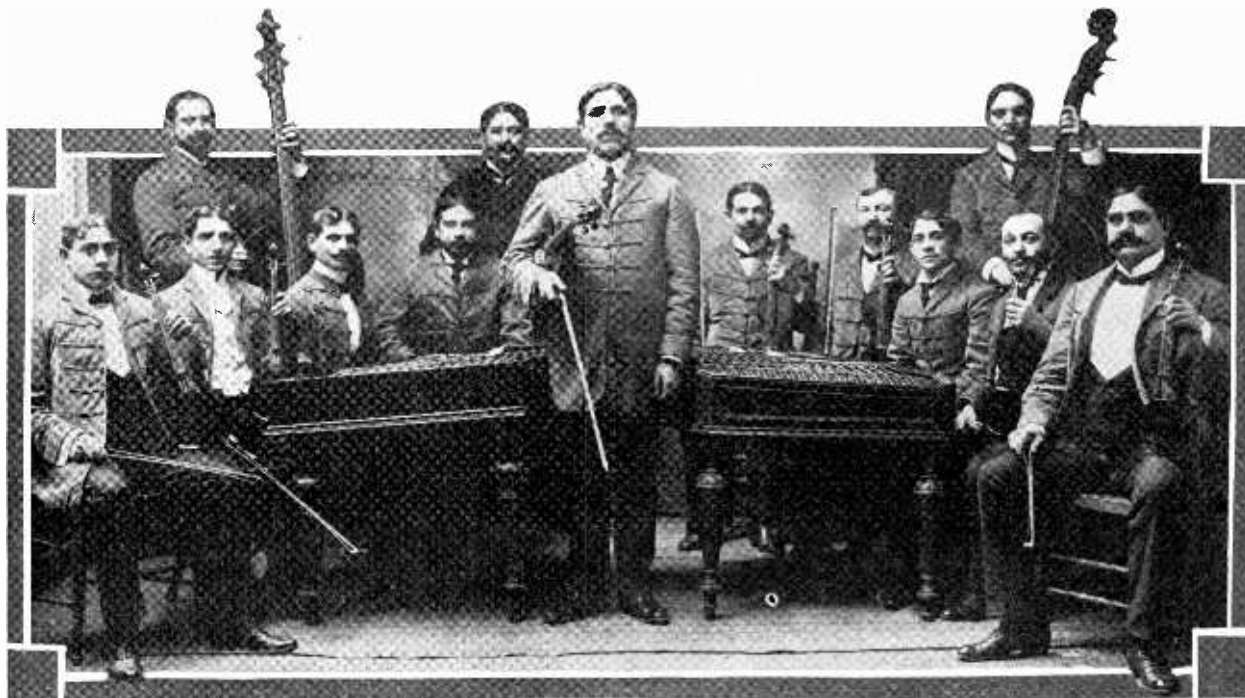
usually popular and well balanced quartet are all well known church choir and concert soloists and have sung at KDKA many times in the past. Genevieve Marshall, soprano; Anne H. Woestehoff, contralto; Warren C. Kinder, tenor; George L. Kirk, baritone; Mrs. James H. Greene, accompanist; Mrs. James Stephen Martin, director. They will give a charming Peter Pan Song Cycle by Ivan Travalsa, new to Pittsburgh.

Program: "On Wings of Song," Mendelssohn, sung by George L. Kirk; "When Stars Greet Night," M. Hunter, sung by Genevieve Marshall; "The Shepherds Song," Salter, sung by Warren C. Kinder; "Yonder" Oliver, sung by Anne H. Woestehoff; "Peter Pan Song Cycle" Travalsa, including the following numbers—"The Coming of Peter Pan," by the quartet; soprano solo, "My Little House;" Contralto and bass duet, "The Crafty Crocodile;" tenor solo, "Good Advice;" quartet selection "The Bedtime Stories;" bass solo, "A Pirate Bold;" soprano and tenor duet, "Spring Cleaning;" contralto solo, "There and Back;" selection by the quartet, "The Land of Make Believe."

**Wednesday, November 22, 1922**

- 7:00 P. M. News. Tri-Weekly Letter from Farm & Home. Weekly summary of the Iron and Steel Industries, prepared by The Iron Age.

November 18, 1922



KDKA's Invisible Audience Recently Enjoyed Hearing the Famous Hungarian Gypsies; Louis Rakony, Leader.

- 7:30 P. M. Bedtime story for the children.
- 8:00 P. M. "Seeing With the Eyes of Youth", by Dr. A. Goldstein, Pitt Optical Co., Pittsburgh, Pa.
- 8:30 P. M. Concert by Mrs. George Hoffman of Ambridge, Pa., soprano, Mrs. Halfdan Lee, accompanist, Robert Steel, baritone, Agnes Steel, accompanist, with several selections by KDKA Orchestra.

Program: Soprano solos to be announced by radio-  
phone. Baritone solos, "Conquered," Ed. St. Quentin; "A Son of the Dessert Am I," Billets; "Orpheus with his Lute," Henry Parker; "Songs that Reach My Heart," Jordan. Orchestra selections, "Serenata," Moskowski; (a) Minuet, Bolzoni; (b) "Salut d'Amour," Elgar; "March of the Toys," (Babes in Toyland), Herbert.

**Thursday, November 23, 1922**

- 7:00 P. M. News. United States Semi-Weekly Public Health Bulletin.
- 7:30 P. M. Bedtime story for the children.
- 8:00 P. M. Hints on Modern and Practical Home Furnishing, prepared by Miss Harriet Webster of The Joseph Horne Company, Pittsburgh, Pa.

An address of interest to the agriculturalist, prepared by the National Stockman and Farmer, Pittsburgh, Pa.

- 8:30 P. M. Program of original compositions by Adolph M. Foerster. Mrs. Gertrude Sykes King, soprano; Ruth Duthorne, pianist; Oscar L. Helfenbein, pianist; Max Silverman, violinist; Joseph Replogle, cellist.

The songs of Adolph M. Foerster, native of Pittsburgh, have been increasingly admired for their lofty idealism, and, no less, for their absence of the commonplace, thus establishing a standard of excellence of no uncertain solidity.

Gertrude Sykes King, one of Pittsburgh's best known soprano soloists, is a general favorite where ever she is heard. She has sung most successfully at KDKA on several previous occasions, and is singing again after many requests for her return. Mrs. King began her musical studies in Pittsburgh, later going to New York and the New England Conservatory of Music in Boston. She travelled several seasons for the Redpath Chautauqua; is concert soloist of wide reputation, and has been for many years identified with church work and the best things musically.

Program: Trio, "First Movement" Op. 61; Piano solos, "Exultation, Op. 37;" "Homage to Brahms." Violin solos, "Novelette Op. 26;" soprano solos, "Tristram and Iseult, Op. 60" "My Harp, Op. 71;" If In Loving Singing," with violin obligato; trio, Second Movement Op. 83.

**Friday, November 24, 1922**

- 7:00 P. M. News. Tri-Weekly Letter from Farm and Home. Report on World Trade Conditions, furnished by The Trader & Industrial Bureau of the Pittsburgh Chamber of Commerce.
- 7:30 P. M. Bedtime story for the children.
- 8:00 P. M. "Literary Moments." Weekly Talk on "Etiquet" by Mrs. Margaret Storey.
- 8:30 P. M. Program by the Westinghouse Community Chorus, under the directorship of Alfred Bartletti, including vocal duets, trios and quartets.



IRWIN MALE QUARTET

F. M. Rainey, first tenor; W. A. Matthews, second tenor; C. E. Smith, first bass; R. Bouldin, second bass; Norman Lycett, pianist.

Saturday, November 25, 1922

- 2:30 P. M. Results, play by play, of the Carnegie Tech-Notre Dame football game at Forbes Field, Pittsburgh, Pa.
- 7:00 P. M. News. Football scores.
- 7:30 P. M. Bedtime story for the children.
- 7:30 P. M. Bedtime story for the children. "Under the Evening Lamp", courtesy of Youth's Companion.
- 8:00 P. M. Special addresses by prominent business men.
- 8:30 P. M. Concert by the East Liberty Y. M. C. A. Orchestra, under the leadership of Oscar Demmler.

Sunday, November 26, 1922

- 10:45 A. M. Services of the Calvary Episcopal Church, Shady Avenue, Pittsburgh, Pa. Rev. E. J. Van Etten, rector.
- 2:45 P. M. Children's Bible Story, by Rev. W. A. Logan, Pastor, Alpha Lutheran Church, Turtle Creek, Pa.
- 3:00 P. M. Organ recital by Earle Mitchell, organist of the Shady Ave. Presbyterian Church, Pittsburgh, Pa.
- 4:45 P. M. Vesper Services of the Shadyside Presbyterian Church, Amberson Avenue near Fifth Avenue, Pittsburgh, Pa. Dr. Hugh Thomson Kerr, D.D., Pastor.
- 7:30 P. M. Services of the Point Breeze Presbyterian Church, Fifth and Penn Avenues, Pittsburgh, Pa. Dr. P. H. Barker, Pastor. Pennsylvania College for Women Chorus.

# HOMCHARGE



Your  
RADIO  
BATTERY  
for  
A NICKEL

Enjoyable Radio Concerts and maximum receiving range are obtained only when your battery is fully charged.

Don't be bothered with the inconvenience and expense of taking your battery to a service station every few days for recharging.

THE

## RADIO HOMCHARGER DE LUXE

has been designed especially for this purpose. It charges your "A" or "B" battery over night without removing from the living room—gives taper-charge—cannot harm your battery in any way. Simplicity itself. Only two wearing parts, replaceable after several thousand hours use for One Dollar.

### AN ORNAMENT FOR YOUR LIVING ROOM

Beauty has been combined with utility in the NEW RADIO HOMCHARGER DE LUXE.

The body is beautifully finished in rich Antique Mahogany—the base and fittings in a handsome dull gold. Equipped with rubber feet, it cannot mar polished surfaces. It harmonizes with the finest living room.

### OVER 50,000 HOMCHARGERS IN USE

50,000 users have heartily endorsed the HOMCHARGER. Beware of imitations when buying and insist on obtaining the genuine which bears our registered trade name, HOMCHARGER.

Furnished Complete. No extras to buy. Price \$18.50 (\$25.00 in Canada) at all good dealers, or shipped prepaid upon receipt of purchase price.

Booklet illustrating the NEW RADIO HOMCHARGER DE LUXE in actual colors is FREE for the asking. Send for your copy today.

DEALERS—JOBBER: Over 150,000 HOMCHARGERS will be sold this fall and winter. Send for your copy of "HOMCHARGER Business Builders" and see how you can get your share of this business.

### CAUTION

When buying a Rectifier insist upon the following:

- 1—SELF-POLARIZING feature, otherwise your battery may be ruined through reverse charging.
- 2—AT LEAST FIVE AMPERE CHARGING RATE, otherwise it will require several days to fully charge your battery.
- 3—UNDERWRITERS' APPROVAL, otherwise in case of fire your insurance may be void.

The HOMCHARGER is the only Rectifier at any price which combines the above, three NECESSARY HOMCHARGING features.

### The Automatic Electrical Devices Co.

136 West Third St. CINCINNATI, OHIO

#### Branch Offices:

New York Chicago Pittsburgh Detroit Dallas  
Philadelphia Baltimore Minneapolis Atlanta  
Los Angeles St. Louis Kansas City

Largest Manufacturers of Vibrating Rectifiers  
in the World



TYPE A FOR WALL MOUNTING

OVER 50,000 IN USE

November 18, 1922

**KDKA'S WEEK-DAY SCHEDULE**

- 10:00 to 10:15 A. M. Music.
- 12:30 to 1:00 P. M. Music.
- 3:00 P. M. Saturdays Broadcasting of football games, play by play, direct from Forbes Field. Scores of College football games at 7:00, 8:00 and 10:00 P. M.
- 7:00 to 7:15 P. M. Late news and other features.
- 7:15 to 7:30 P. M. Theatrical Features.
- 7:30 to 7:45 P. M. Children's bedtime story.
- 7:45 to 8:00 P. M. Government Market Reports and a Summary of the New York Stock Exchange.
- 8:00 to 8:30 P. M. Special addresses.
- 8:30 to 9:55 P. M. Musical program.
- 9:55 to 10:00 P. M. Arlington Time Signals.


Steinway Duo-Art Reproducing Piano and Rolls and Aeolian Orchestrelle—courtesy of C. C. Mellor Company, Pittsburgh, Pa.

Brunswick Phonograph and Records procured from Grey and Martin, Pittsburgh, Pa.

Edison Phonograph and Records—courtesy of J. E. Bumbara, Swissvale P. O., Pittsburgh, Pa.

Victor Records—courtesy of S. Hamilton & Company, Wilkinsburg, Pa.

*For Wireless—*  
**ROME MAGNET WIRE**  
 Plain Enamel  
 Single Cotton Covered  
 Double Cotton Covered  
**ROME ANTENNA WIRE**  
 Stranded or Solid



*Ask Your Dealer*  
**ROME WIRE COMPANY**  
 ROME, N. Y.                      BUFFALO, N. Y.

**DUBILIER CONDENSERS**

*35 cents to \$1.00*

Reduce tube noises and improve reception. Made like famous Dubilier Transmitting Condenser, now standard equipment throughout the world.

These new receiving condensers are of permanent capacity and will not burn out in service.

See that your receiving set is equipped with Dubilier Condensers. Price: Type 601, 35 to 40 cents each, according to capacity.

Price: Type 600, with grid-leak mounting, 75 cents each for capacities from .0001 to .002 mfd; for capacities from .002 to .005 mfd, \$1.00 each.

*Order from your dealer or jobber*

**The Dubilier Condenser and Radio Corp.**

48-50 West Fortieth Street, New York

**DOUBLEDAY-HILL ELECTRIC COMPANY  
STATION KQV**

**360 Meters                      Pittsburgh, Pa.**  
**Eastern Standard Time**

Broadcasting each day, except Sundays, from 12:00 to 12:30 Noon, and from 4:30 to 5:00 P. M.

Evening Artists' Programs Monday, Wednesday and Friday, from 10:00 to 10:55.

**Regular and Special Features**

**Mondays—4:30 P. M. Music, and Roger V. Babson Weekly Economic Report, given by Mr. E. A. Pilgrim, Pittsburgh representative.**

**Wednesday—12:00, noon, Music and "Agriogram," from U. S. Department of Agriculture.**

**Thursday—4:30 P. M. Music, and Weekly Library Letter on "Good Reading and the New Books," furnished by Carnegie Library Pittsburgh.**

Of **SPECIAL INTEREST to RADIO LISTENERS** is the ANNOUNCEMENT that STATION KQV, will broadcast the Song Cycle, "The Persian Garden," by Liza Lehman, complete, on Friday evening, December 8. It will be sung by the **Cycle Quartet** of Pittsburgh, under the direction of Lyman Almy Perkins. Personnel of the Quartet is: Marie Shaner, soprano; Ella Hersman Dosch, contralto; Arthur C. Stott, tenor; Joseph Rogers, baritone.

**SPECIAL THANKSGIVING PROGRAM** on Wednesday evening, November 29, to be given by Artist Students from the Studio of Mrs. James Stephen Martin.

**Monday, November 20, 1922**

10:00 P. M. Program by Metta E. Greenawalt, soprano, of Pittsburgh, and Ernest G. Scott, baritone, of Avalon, Pa., Miss Mildred Klingensmith, of Jeannette, Pa., accompanist.

Mr. Scott was a student for several years of Gilden R. Broadbury of the Western Pennsylvania School for the Blind, and also a student under the late Morris Stephens, in Pittsburgh. His baritone voice is of lovely resonance, of wide range and he sings with much sympathy and includes some of the best song literature in his repertoire. Miss Greenawalt has just returned from a summer spent in France where she was a student in the American Conservatory of Music, of Fontainebleau. She spent four months in Europe dividing her time between study and travel. At Fontainebleau she studied under Mlle. Marcelle Demougeot, and Robert Casadesus, both associated with Grand Opera in Paris. Miss Greenawalt was one of the singing class which sang for Muratore, of the Chicago Opera Company, on the occasion of his visit to the School last summer. The accompaniments for the program at that time being played by M. Chadeigne, of the National Conservatory, of Paris. In Pittsburgh, Miss Greenawalt is Special Music Supervisor in Latimer High School, Northside.

Soprano solos: "Automne" and "Aurore" (in French) by Gabriel Faure; "Were My Song with Wings Provided," by Hahn; "Angels ever Bright and Fair," by Handel; "By the Waters of Minnetonka," by Lieurance. Baritone solo: "The Toreador Song," from Carmen, by Bizet; "Hold thou my Hand," by Briggs; "My Ain Folk," by Wilfrid Mills; "Sing me to Sleep," by Edna Greene; and "The Rosary," by Nevin.

*(Continued on page 16)*

New York and Eastern District  
RADIO CORPORATION WESTINGHOUSE  
STATION WJZ

360 Meters Newark, N. J.

Eastern Standard Time

Sunday, November 19, 1922

- 10:30 A. M. Musical program.
- 11:00 A. M. Morning prayer and the Holy Communion Church services at the St. Thomas Church, Fifth Ave., and 53d St., New York City. Rev. Ernest M. Stires, D.D. rector of St. Thomas's Parish for 21 years, formerly of the Grace Church, Chicago, will officiate. Mr. T. Tertius Noble, organist, noted composer of religious music, will direct the boys' and men's choir of 70 voices.
- 3:00 P. M. Radio Chapel Services. Sermon by the Rev. William Wilkinson of Trinity Parish, known the world over as "The Bishop of Wall Street", having conducted noon hour meetings in the financial district of New York City for 18 years. A soap box is his pulpit and his congregation is composed of men in all walks of life; of all creeds, and of none. Sacred music program.
- 4:00 P. M. Recital by Johan Haae Zinck, tenor, of Woodridge, N. J.
- 4:40 P. M. "Books for Boys" by Franklin K. Mathews, author of the Boy Scouts Year Book.
- 4:45 P. M. "Something for Everybody", copyrighted stories by the Youth's Companion. "Building up Lucius," the Toonerville Trolley in real life; "Keeping up with the Juniors," useful suggestions for the Sunday School teacher; "Reason or Instinct," being an example of the remarkable sagacity of a pet cat; "An Apt Pupil," a bit of humor from a California School.
- 6:30 P. M. Readings and records from "The Bubble Books that Sing" by Ralph Mayhew, courtesy Harper & Bros.
- 7:00 P. M. Adventure Stories for older boys and girls. Reading from "A Maid of Old Manhattan" by Dr. and Mrs. Knipe; courtesy the MacMillan Company.
- 7:30 P. M. "Impersonations" by Mrs. Curtis Burnley Railing, Principal of the Curtis Burnley School of Elocution, New York City.
- 7:45 P. M. Lecture by Wadsworth Camp, author of "Guarded Heights"; courtesy Doubleday Page Company.
- 8:00 P. M. Concert by Leonard Snyder, tenor.
- 8:15 P. M. Recital by Mme. Nouvart Dzeron Koskarian, mezzo soprano, born in Armenia and brought to America when a child, by her parents. She is well known in the United States for her Armenian Costume Recitals. The following program with flute obligatos by William Schade, and piano accompaniments by Kay Seal, will be rendered.

"From the Land of the Sky-Blue Water," Wakefield Cadman; "The Moon Drops Low," Cadman; "Crows Egg," Lieurance; Armenian Folk Songs, "Im Chinnare Yarre," "When My Caravan has Rested," Lohr; "Till

*A Message to Radio Dealers*

**Sell Sets This Winter**

Radio Sets should be in every home. They bring news and entertainment which interests the whole family.

Selling Sets is profitable. It brings you new customers and renewal orders from old customers. Each set you put into a home is a living advertisement for you and will sell other sets to neighbors and friends. When you sell a set the amount of sale is large, the discount is liberal, and the turnover is quick.

*Ludwig Hommel & Co. Dealers get more than their share of the set business because:—*

1. The Radio Corporation of America, Colin B. Kennedy, and Clapp Eastham Sets they sell give satisfaction, and satisfaction brings repeat orders.
2. Orders are shipped immediately from a large stock. The dealer can order all his requirements from Ludwig Hommel & Co., and be sure of receiving them.
3. Ludwig Hommel & Co. wholesales exclusively and does not compete with its dealers by retailing. Consumers' inquiries that result from a tremendous advertising campaign are referred to local dealers.
4. Dealers are advised in advance of price changes and new material.
5. Hommel's Encyclopedia of Radio Apparatus together with the Dealer's Helps distributed make sales easy. Dealers can get this Encyclopedia by asking for it.

*Send your next order to Ludwig Hommel & Co. and learn what real jobber's service to dealers is.*

**LUDWIG HOMMEL & CO**  
530-534 FERNANDO ST. ——— PITTSBURGH, PENNA

I Wake," Finden; "Her Dream," Frank Waller; "Crossing the Bar," Jos. Hecker; "Sans Toi," D'Har-delot; "Dusk in June," Fay Foster; "At Dawning," Wakefield-Cadman.

- 9:05 P. M. "Directing Douglas Fairbanks in Robin Hood", by Allan Dwan, former star of the Notre Dame Football team and a member of the All-American Eleven of 1905.

Mr. Dwan began his motion picture career as a scenario writer and soon thereafter was promoted to directorship. Since then he has directed various pictures featuring Mary Pickford, Marguerite Clark, Douglas Fairbanks, Norma Talmage, Wm. H. Crane, Clara Kimball Young, and Malcyn Arbuckle.

- 9:30 P. M. "Romeo and Juliet" by Mona Morgan, a Shakespearean interpreter.
- 9:55 to 10:00 P. M. Arlington Time Signals. Official Weather Forecast.
- 10:01 P. M. Continuation of the program by Mona Morgan.

**Monday, November 20, 1922**

For Regular Daytime Features See End of Program.

- 5:30 P. M. Closing prices on stocks, bonds, grains, coffee and sugar.
- 5:45 P. M. Resumé of Sporting events.
- 6:00 P. M. Business and Industrial Conditions in the United States as observed by the National Industrial Conference Board.
- 7:00 P. M. Stories from the St. Nicholas Magazine.
- 8:30 P. M. Concert by Dorothy Degnan, soprano of West Orange, N. J., accompanied by Marguerite Cowan, pianist, also of West Orange. Miss Degnan is a former pupil of



November 18, 1922

John Barnes Wells, who coached her in his compositions.

Program: "Why," "A Little Rock," "The Elf Man," by John Barnes Wells; "Beau Soir" Debussy; "Danny Boy," Weatherby.

Concert by William D. Goble, tenor; Louise Thomson, accompanist. Mr. Goble has sung in Bridgeport, Brooklyn, and in New York City in several of the larger churches, where he has done considerable concert work. He has also broadcasted a program of songs from every radio station in the Eastern district.

Program: "Mattinata," Leoncavallo; "Once in a Blue Moon," Fisher; "An Emblem," Thompson; "The Angel Cake," Smith; "Ireland, Mother Ireland," Loughborough; "When Song is Sweet," San Souci; "The World is Waiting for the Sunrise," Seitz; "Viene Sul Mar," Daniels.

9:30 P. M. Concert under the direction of Charles D. Isaacson, of the New York Evening Mail. Max Kaplick, baritone; Abraham Haitowitzon, violinist; David Shapiro, pianist; Gladys Rice, soprano, Rose Phipps, accompanist.

Program: Baritone, solos, "Il Soino," Tosti; "L'ultima Canzone," Tosti; "I Shall Know," Mana-Zucca; and "Aria from 'Herodiade,'" Massenet; violin solos, "Caprice Venoise," Kreisler; "Poem" Fibich; "Perpetuum Mobile," Ries; "Hebrew Melody," Achron; and Caprice No. 24," Paganini-Auer. Soprano solos, "Pleurez, Pleurez mes yeux from 'Le Cid,'" Massenet; "Do Not Go My Love," Hageman; "Last Rose of Summer," Flotow; "All for You," Martin. Special selection "Face to Face with Massenet," by Chas. D. Isaacson, from "Face to Face with Great Musicians."

9:55 to 10:00 P. M. Arlington Time Signals. Official Weather Forecast.

10:01 P. M. Continuation of the program by Chas. D. Isaacson.

**Tuesday, November 21, 1922**

For Regular Daytime Features See End of Program.

5:30 P. M. Closing prices on stocks, bonds, grain, coffee, and sugar.

5:45 P. M. Resumé of sporting events.

5:55 P. M. "Iron and Steel" by the Iron Age.

6:00 P. M. Musical Program.

7:00 P. M. Children Stories.

9:00 P. M. "Sulphur" by Albert M. Andrews of the Tryah Valley Sulphur Company.

9:15 P. M. Concert by Constance Eberhardt, soprano; courtesy Betty Tillotson Concert Bureau.

9:30 P. M. Program of Schubert Music, by the Schubert Quartet, of Rutherford, N. J. Albert F. Metz, first violin; John Hammond Gill, second violin; W. Hart Haight, viola; and Ryskin McKnight, cello.

Each member of the quartet which is associated with the Rutherford Symphony Orchestra, has played string instruments for over 20 years. The program includes four movements of the quartet Op. 125 No. 1 by Schubert. "Allegro Moderato," "Scherzo," "Adagio," and "Allegro."

9:55 to 10:00 P. M. Arlington Time Signals. Official Weather Forecast.

10:01 P. M. Continuation of the program by Constance Eberhardt, and the Schubert Quartette.

**Artists at Newark Station WJZ**



Left to Right:—Maurice La Farge, pianist; George S. Madden, baritone; and Sibyl Sammis MacDermid, soprano.

**Wednesday, November 22, 1922**

For Regular Daytime Features See End of Program.

5:30 P. M. Closing prices on stocks, bonds, grains, coffee and sugar.

5:45 P. M. Resumé of sporting events.

5:55 P. M. "Iron and Steel Review" by the Iron Age.

6:00 P. M. Musical program.

7:00 P. M. "Animal Stories" by Florence Vincent Smith of the New York Evening Telegram.

9:00 P. M. Concert by the premier Male Quartette of Brooklyn, N. Y.

9:45 P. M. "Friendship and Love" by Beatrice Fairfax, courtesy Betty Tillotson Concert Bureau.

9:55 to 10:00 P. M. Arlington Time Signals. Official Weather Forecast.

**Thursday, November 23, 1922**

For Regular Daytime Features See End of Program.

5:30 P. M. Closing prices on stocks, bonds, grains, coffee and sugar.

5:45 P. M. Resumé of sporting events.

6:00 P. M. Musical program.

7:00 P. M. "Jack Rabbit Stories" by David Cory, of the New York Evening Mail.

8:30 to 9:15 P. M. Joint recital by Zona Maie Griswold, soprano, well known concert singer of the Southwest, and Aline Hurrell Shute, lyric soprano of New York.

Program by Zona Maie Griswold, "Voi Che Sapete," Mozart; "Autumn," Arebsky; "De San' Man," Griswold; "Je Dis Que Rien Ne M'Epouvante," Bizet; "The Danza," Chadwick; "Love's Old Sweet Song," Molloy; and "Ah Love, But a Day," Gilberte.

Program by Mrs. Shute—"Allah," Chadwick; "Thou Art So Like a Flower," Chadwick; "When My Caravan Has Rested," Lohr; "Pale Moon," Logan; "Memory," Canz; "I Heard a Wood Thrush," Logan; "Wenn Ich in Deine Augen Sehn," Schuman.

9:15 P. M. "The Use of Intelligent Tests in the School", by Ruth S. Clark, Vocational Service for Juniors, New York City.

9:30 P. M. Dance music by the Belvedere Syncopators who have played for many of the best known clubs in New York City. Jos. F. Bazata, director and violinist; James Gilleeny, pianist; Leonard Donnelly, saxophone; Gerald Anderson, banjo; James Shannon, cornet; Harold Purves, drums.

Program: "Lonesome Mamma Blues," "Chicago," "Burning Sands," "Pal of All Pals," "Suez," "Nobody Lied," "Just Because You're You," "Blue," "Sister Kate," "The Trail to Long Ago," "Carolina in the Morning," "Kitten on the Keys," piano solo by James Gilleeny.

9:55 to 10:00 P. M. Arlington Time Signals. Official Weather Forecast.

10:01 P. M. Continuation of the program by the Belvedere Syncopators.

**Friday, November 24, 1922**

For Regular Daytime Features, See End of Program.

5:30 P. M. Closing prices on stocks, bonds, grain, coffee and sugar.

5:35 P. M. "Under the Evening Lamp", copyrighted stories by the Youth's Companion. "In the Nick of Time" by Mather Brooks, being a mid-air escape from a burning airplane.

5:45 P. M. Conditions in the leading industries by R. D. Wychoff, Magazine of Wall Street.

5:50 P. M. Resumé of sporting events.

6:00 P. M. "Bedtime Stories" by Thornton Burgess.

7:15 P. M. "Talk on Dogs", by Frank Dole.

8:30 P. M. Recital by Marion Armstrong, a Scotch comedian soprano who had the distinction of being the first soloist to be heard at the Eastman Theater of the University of Rochester.

The program includes "The World is Waiting for the Sunrise," which made a decided impression in Rochester. The radio audience also requests Miss Arm-

strong to sing "Her Love Song," by Mary Turner Salter which she sang so delightfully in her recital in the Aeolian Hall. Radio recital arranged by the Betty Tillotson Concert Bureau.

9:00 P. M. Literary Hour conducted by the editorial staffs of the Scientific American, Outlook and Harper & Bros.

9:55 P. M. Arlington Time Signals. Official Weather Forecast.

10:01 P. M. "Scenes from Henry the Fifth" by Mona Morgan, a Shakespearean actress who specializes in teaching these classics to school children.

**Saturday, November 25, 1922**

11:00 A. M. Thanksgiving Day Holy Communion Service and Sermon at the St. Thomas Church, Fifth Ave., at 53d Street, New York City. Rev. Ernest M. Stires, D.D. Rector of the St. Thomas's parish for 21 years.

2:00 P. M. Play by play results of the Army and Navy Football game direct from the Franklin Field at the University of Pennsylvania.

Highest government officials who practically always attend this annual football classic, will be invited to speak. The Cadets of the Army and Navy are trained to the highest degree in singing the Army and Navy Songs and are unexcelled in cheering their teams. The result of this hotly fought gridiron battle is always in doubt. The thousands who are always turned away from the overcrowded football field will be able this year to enjoy every thrill of the game through the broadcasting of WJZ and the assistance of the Western Union Telegraph Company. The game will be covered by a very well known football expert and sport writer.

5:30 P. M. Closing prices on stocks, bonds, grain, coffee and sugar.

5:45 P. M. Resumé of sporting events.

6:00 P. M. Musical program.

7:00 P. M. "Uncle Wiggily Bedtime Stories" by Howard R. Garis.

8:30 P. M. "Fashions" by an editor of Harpers Bazaar.

8:45 P. M. "An English Sense of Humor" by Major Vivian Gilbert, who will be remembered by his radio lecture last Spring on "The Last Crusade", depicting his experiences in Egypt under Lord Allenby.

9:45 P. M. Dance Music by the Jersey Blue Serenaders of Midvale, N. J.

9:55 to 10:00 P. M. Arlington Time Signals. Official Weather Forecast.

10:01 P. M. Continuation of the dance music program.

**Sunday, November 26, 1922**

10:30 A. M. Musical program.

11:00 A. M. Morning prayer and Litany Church Services of the St. Thomas's Church, New York City, Rev. Ernest M. Stires D.D. rector. T. Tertius Noble, organist, noted composer of religious music will direct the boys and mens choir of 70 voices.

3:00 P. M. Concert by City Symphony Orchestra at the Manhattan Opera House, organized and maintained by the Musical Society of the City of New York. Dirk Foch, conductor. Arranged through "Popular Radio".

3:40 P. M. "Be Your Own Decorator" by Emily Burbank, lecturer on arts and decoration,

courtesy Dodd Mead & Company, and the National Association of Book Publishers.

- 4:45 P. M. "Something for Everybody", copyrighted stories conducted by the Youth's Companion.
- 6:30 P. M. Readings and records from "The Bubble Books That Sing", by Ralph Mayhew, Harper & Bros.
- 7:45 P. M. Inspirational message by O. S. Marden, editor of Success Magazine.
- 7:00 P. M. Adventure stories for older boys and girls. Reading from "The Boy's Own Book of Great Inventions" by Floyd Darrow, courtesy of the MacMillan Company.
- 7:30 P. M. "Book Review" by Grace Isabel Colbron.
- 8:00 P. M. Concert by the pupils of Theodore Van Yorx; Viola Blanche, lyric soprano of extraordinary range of voice, who is well known throughout the East. Lucy V. Seidler, alto, known through New England by her concert recitals; and Harry J. Kemp, tenor who has had much experience in concert and oratorio work; Albert Fischer, the second basso, in the celebrated Lyric Male Quartet; Edward Young, pianist graduate of the Institute of Musical Art and pupil of Mme. Luchtman, will be the accompanist.
- 9:05 P. M. Recital by Sophia Sanina, pianist.
- 9:30 P. M. "Hamlet" a Shakespearean interpretation by Mona Morgan.
- 9:55 to 10:00 P. M. Arlington Time Signals. Official Weather Forecast.
- 10:01 P. M. Continuation of the program by Mona Morgan.

#### REGULAR DAYTIME FEATURES

- 9:00 A. M. Early morning reports and prices on farm products.
- 11:55 A. M. Standard Time Signals from Arlington. Official Weather Forecast.
- 12:00 M. Opening prices of active bonds, stocks, grain, coffee and sugar; midday reports and prices of farm products.
- 1:00 P. M. Musical Program.
- 4:00 P. M. Closing prices on active bonds, stocks, grain, coffee and sugar.
- 4:05 P. M. "Fashions" by the Women's Wear Daily Newspaper.
- 9:55 P. M. Standard Time Signals from Arlington.
- 10:01 P. M. Official Weather Forecast.

#### WESTINGHOUSE STATION WBZ

360 Meters

Springfield, Mass.

Eastern Standard Time

- 11:55 to 12:00 M. Arlington Time Signals
- 7:30 P. M. Sport News; Bedtime Story.
- 7:45 P. M. Prominent speaker, market and weather reports, and late news.
- 8:00 to 9:00 P. M. Program of music.
- 8:00 P. M. Sunday—Radio Church Services

#### GENERAL ELECTRIC COMPANY—STATION WGY

400 Meters

Schenectady, N. Y.

Eastern Standard Time

Sunday, Nov. 19, 1922

- 10:30 A. M. Morning service of Unitarian church, the Rev. Ernest Caldecott, pastor.
- 4:30 P. M. Vesper service with sermon by the Rev. H. W. True.

Monday, November 20, 1922

- 11:55 A. M. U. S. Naval Observatory time signals.
- 12:30 P. M. Noon stock market quotations.
- 12:45 P. M. Weather report on 485 meters wavelength.
- 2:00 P. M. Music and special features for the housewife.
- 6:00 P. M. Produce market quotations and reports; closing stock market quotations; news bulletins.
- 7:45 P. M. Musical program as follows:

Instrumental selection, "Mummer's March," J. Mantel, WGY Instrumental Quartet; Soprano solo, "Smilin' Through," Penn, Eva M. Hayes; Violin duet, "Pren-demi Teco," from "Romeo and Juliet," Vaccai, E. A. Rice and Leo Kliven, O. G. Yettru, Accompanist; Soprano solo, "I Dream That I Hear You Singing," Marshall, Eva M. Hayes; Selection, for two violins, cello and piano, Berceuse, "Au Soir," Nevin, WGY Instrumental Quartet; Piano solo, Selections from "Faust," Gounod, Erno Rapee, Duo-Art; Instrumental selection, "Nocturne," De Koven, WGY Orchestra; Soprano solo, "Thank God for a Garden," Del Riego, Eva M. Hayes; Instrumental selection, Waltz, "Tales from the Vienna Woods," Strauss, WGY Orchestra; Violin solo, "Andante," Wieniawsky, E. A. Rice; Instrumental selection, "Le Dauphin," W. Seeböck, WGY Orchestra

Tuesday, November 21, 1922

- 11:55 A. M. U. S. Naval Observatory time signals.
- 12:30 P. M. Noon stock market quotations.
- 12:45 P. M. Weather report on 485 meters wavelength.
- 2:00 P. M. Music and subjects of interest to women.
- 6:00 P. M. Produce and stock market quotations; news bulletins.
- 7:45 P. M. Concert Program.

March, "Liberty Bell," Sousa. General Electric Band, Charles F. Roth, Conductor; Overture, "Stradella," Fr. V. Flotow, General Electric Band; Tenor solo, "I'll sing Thee Songs of Araby," Clay, E. Arthur Hannay; Cornet Duo, "Short and Sweet," T. V. Short, Fantasie, "The Butterfly," Theo. Bendix, General Electric Band; Tenor solo, "Obstination," in French, de Fontenailles, Mr. Hannay; Waltz, "Chantilly," E. Waldteufel, General Electric Band; Tenor solo, "Mona," Adams, Mr. Hannay; (a) Caprice, "Moraima," Espinosa, (b) Indian Intermezzo, "Aisha," Lindsey, General Electric Band.

Wednesday, November 22, 1922

- 11:55 A. M. U. S. Naval Observatory time signals.
- 12:30 P. M. Noon stock market quotations.
- 12:45 P. M. Weather report on 485 meters wavelength.
- 2:00 P. M. Music and subjects of interest to women.
- 6:00 P. M. Produce and stock market quotations; news bulletins.

**Thursday, November 23, 1922**

- 11:55 A. M. U. S. Naval Observatory time signals.
- 12:30 P. M. Noon stock market quotations.
- 12:40 P. M. Music.
- 12:45 P. M. Weather report on 485 meters wavelength.
- 2:00 to 2:30 P. M. Music and subjects of interest to women.
- 6:00 P. M. Produce and stock market quotations; news bulletins.
- 7:45 P. M. Drama "Madame X" by J. W. McConaughy, music by the WGY Orchestra. Presentation under personal direction of Irene Ossier. Miss Ossier, second woman in the country to play Madame X under the management of Henry Savage, is appearing as guest artist of the WGY players.

**The Cast**

Jennie Wren, later known as Madame X  
 ..... Irene Ossier  
 Her Husband ..... Edward H. Smith  
 The Son ..... Henry Miller  
 Larouque . . . . . James Mullarkey  
 Other characters in the play will be interpreted by Nan Crawford, Frank Oliver, Frank Finch and Margaret V. Smith.

Instrumental selection, "Melody in G Flat," Cadman, WGY Instrumental Quartet; Drama, Madame X, J. W. McConaughy, First Episode: The separation. Jennie Wren becomes a social outcast. Instrumental selection, "Adieu," Friml, WGY Instrumental Quartet; Drama—Madame X. Second Episode: Several years later, Jennie Wren's husband has become a prosecutor, and her son a promising young attorney. Instrumental selection, "Love Song," Nevin, WGY Instrumental Quartet; Drama—Madame X. Third Episode: In which we again meet Jennie Wren. Instrumental selection, "Dialogue," Meyer-Helmund, WGY Instrumental Quartet; Drama—Madame X. Fourth Episode: Scene I. The trial. Instrumental selection, "Traumeri," MacDowell, WGY Instrumental Quartet; Drama—Madame X. Fourth Episode: Scene II. Instrumental selection, "Told at Twilight," Huertter WGY Instrumental Quartet.

**Friday, November 24, 1922**

- 11:55 A. M. U. S. Naval Observatory time signals.
- 12:30 P. M. Noon stock market quotations.
- 12:45 P. M. Weather report on 485 meters wavelength.
- 2:00 P. M. Music and talks of interest to women.
- 6:00 P. M. Closing produce and stock market quotations; news bulletins.
- 6:30 P. M. Story from Grimm's Fairy Tales, Kolin D. Hager, reader.
- 7:40 P. M. Health Talk by Dr. Herman M. Biggs, health Commissioner of New York State.
- 7:45 P. M. Musical program as follows:

Instrumental selection, "Koko San," Igushi Kamote, WGY Instrumental Quartet; Piano solo, "Nocturne," from Midsummer Night's Dream, Mendelssohn; O. G. Yettru; Tenor solo, "Rose of My Heart," Lohr; Ben Franklin; Instrumental selections, (a) Fox Trot, "The Country Flapper," Pelt, (b) Waltz, "When the Leaves Begin to Fall," Baron, WGY Instrumental Quartet; Tenor solo, "When Song is Sweet," San Souci, Ben Franklin; Violin solo, "Serenade," Pierre, E. A. Rice; Address—"Building Capital with a Savings Bank Account," R. C. Van Denbergh, Vice President Utica Savings Bank; Instrumental selections, (a) "Intermezzo," Huertter, (b) Waltz, "Three O'Clock in the Morning," Robledo, WGY Instrumental Quartet; Tenor solo, "I Know a Lovely Garden," D'Harlot, Ben

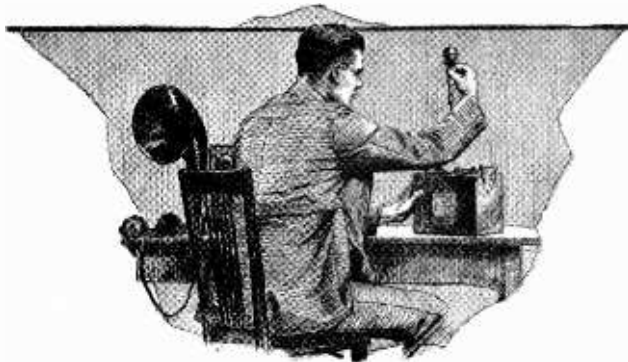


**Eed Miller, oratorio and cantata artist, singing from Station WGY.**

Franklin; Violin Duet, "La Verginella," Bertoni. E. A. Rice and Leo Kliwen; Piano solo, "Song Without Words," Op. 85, No. 1, Mendelssohn, O. G. Yettru; Tenor solo, "Believe Me," Old Irish, Ben Franklin; Instrumental selection, "Marches des Petits, Soldats de Plomb," Pierre, WGY Trio.

**10:30 P. M. Musical program.**

Instrumental selection, "Iris," Friml, WGY Instrumental Quartet; Piano solo, "Menuett," Kjerulf, O. G. Yettru; Instrumental Trio, "Waltz," from the opera "Eugene Onegin," Tchaikowsky, American Trio; Soprano solo, "A Little Home With You," Foster, Ethel Krautter; Violin Duet, "Vanne Al Mio Bene," Blangini, E. A. Rice and Leo Kliwen; Instrumental se-



## Your Battery Should be Kept Fit

The Tungar Battery Charger makes it a simple matter to keep your storage battery tuned-up and fit. With it you can recharge your battery at home—and at little cost.



**Tungar**  
BATTERY CHARGER

is a small, compact rectifier, which can be connected with any a-c. lighting circuit. It is easy and safe to operate—in fact, requires no attention after starting. And when properly connected, the current can go only the one way, eliminating any danger of ruining the battery.

There is no excuse for allowing your battery to run down and spoil the evening's fun. A Tungar doesn't cost much—and it charges the starting and lighting battery in your automobile also.

Send for our new booklet on Tungars for radio, if your dealer cannot supply you.

Address Merchandise Dept., General Electric Company, Bridgeport, Conn.

**General Electric Company**  
General Office Schenectady, N.Y. Sales Offices in all large cities 35A-78X

lection, from the musical comedy, "Sometime," Friml WGY Instrumental Quartet; Soprano solo, "Forgotten" Reynolds, Ethel Krautter; Instrumental selection, "Narcissus," Nevin, WGY Instrumental Quartet; Violin solo, "Spanish Serenade," Nachez, E. A. Rice; Soprano solo, "Song of the Robin," Case, Ethel Krautter; Instrumental selection, "Deep River," an American Negro Melody, Fisher, American Trio.

### Saturday, November 25, 1922

2:30 P. M. Play by play story of Harvard-Yale football game at New Haven, Conn. The story will be told at New Haven and carried to WGY at Schenectady by wire.

### AMERICAN RADIO AND RESEARCH CORPORATION STATION WGI

360 Meters Medford Hillside, Mass.

1:55 P. M. Music.  
2:00 P. M. Current Events. (Boston Traveler.)  
6:30 P. M. Baseball scores; late news. (Boston American) Tuesdays and Thursdays, 6:45 P. M.  
6:45 P. M. Boston Police Reports, except Tuesday and Thursday at 6:55 P. M.  
7:00 P. M. Special Talks.  
7:30 P. M. Program of Music.

### SOME BROADCASTING STATIONS IN IOWA

WOI—Iowa State College, Ames.  
WIAS—Hawk-Eye Home Electric Co., Burlington.  
WJAM—Evening Gazette, Cedar Rapids.  
WKAA—Republican-Times, Cedar Rapids.  
WDAX—First National Bank, Centerville.  
WHAI—Radio Equipment and Manufacturing Co., Davenport.  
WOC—Palmer School of Chiropractic, Davenport.  
WEAB—Standard Radio Equipment Co., Fort Dodge.  
WHAA—State University of Iowa, Iowa City.  
WEAU—Davidson Brothers Co., Sioux City.  
WHAE—Automotive Electric Service Co., Sioux City.  
WIAE—Zimmerman Radio Co., Vinton.  
WEAZ—A. C. Sweetman, Waterloo.  
WHAC—Cole Bros., Electric Co., Waterloo.

WCK is the broadcasting station of Stix, Baer and Fuller, of St. Louis Mo., which broadcasts daily from 12:00 noon to 12:30 p.m. Tuesdays and Thursdays from 3:00 p.m. to 4:00 p.m. and Mondays, Wednesdays, and Fridays at 7:00 p.m.

### REICHMAN-CROSBY MEMPHIS PRESS STATION WKN

360 Meters for Amusements Memphis, Tenn.  
485 Meters for Government

### Central Standard Time

11:45 A. M. Weather Reports.  
2:30 P. M. Bureau of Markets and Crop Estimates.  
8:15 P. M. Music, Lectures, etc.  
11:00 A. M. Sunday, Sermon.

Chicago and Mid-West District

WESTINGHOUSE STATION KYW

400 Meters

Chicago, Ill.

Central Standard Time

Sunday, November 19, 1922

3:30 P. M. Radio Chapel Services conducted by the Rev. James J. Mertz, of Loyola University, Chicago, Ill. The music will be furnished by the choir of St. Igatus Church of Rogers Park, Chicago, Ill.



Rev. James J. Mertz, S. J. Professor of Latin, Loyola University, Chicago

Rev. Mertz was born in Toledo, Ohio, and attended Canisius College, Buffalo, N. Y., and completed his Philosophical and Theological studies at the University of St. Louis, Mo. He was ordained in 1915. For the past 13 years he has taught the classics in Chicago and Toledo, and at present is professor of Latin and public speaking at Loyola University.

He has given missions and retreats throughout the United States, the most successful of these missions being one to 800 men who were called to the service of their country.

His sermon will be taken from the text of Matthew 12:26—"What doth it profit a man if he gain the whole world and suffereth the loss of his own soul." Program: "Kyrie," Terry; "Gloria in C," Haydn, by Hermann Schlitt and the choir; "Graduale, Salve Regina," Dudley Buck, by Theresa Huening, contralto; sermon by Father Mertz; "Credo," Gounod; Offertory "Ave Maria," Stephen A. Ernst, Werra Schuette; "Sanctus," Gounod, Parnell Egan and the Choir; "Benedictus," Gounod, by Werra Schuette and the choir; "Agnus Dei," Haydn, by the choir; "Jesus, Jesus Dearest Lord," Hymnal, Parnell Egan, accompanied by Grace Boswell Cooney; "Ascendit Deus," Turner, by the Choir. Stephen A. Ernst, director and accompanist.

Monday, November 20, 1922

8:00 P. M. Musical concert by Florence Bernstein, soprano; Louis Jacobson, tenor; Jack Stillerman, baritone; and E. Schuneman, concertina. Program: Soprano and baritone duet, "Greetings," Mendelssohn, and "Autumn," Mendelssohn. Selections on the concertina, "Waves of the Danube," Ivanovici; "Stumbling," "Carolina Rolling Stone" and "Why Should I Cry Over You," Miller. Baritone solo,

"Sylvia," Speaks. Soprano solos, "Were My Songs With Wings Provided," Haydn. Tenor solos to be selected.

Tuesday, November 21, 1922

2:35 P. M. Afternoon Concert, courtesy Lyon & Healy Co. from Lyon & Healy Concert Hall.  
8:00 P. M. Program arranged by Lyon & Healy Concert and Artists Department, being a concert by Chicago Heights Women's Club Chorus, under the directorship of John Minnema.

Wednesday, November 22, 1922

8:00 P. M. Musical and literary evening. Eugenie Covert Doll, soprano; Frank D. Greif, tenor; Marguerite Doan Myrick, pianist, Martha Irene Greif, accompanist, and Cornelius Shugarman, reader.

Program: Soprano solos, "For You Alone," Geelh; "Love I Have Won You," Ronald; "Pirate Dreams" (Lullaby) Huerter, and "A Birthday," Woodman. Tenor solos, "Who Knows," Ball, "Isle o' Dreams," Olcott; "Long, Long Trail," Elliott, and "Thank God for a Garden," Del Riego. Piano solos, "Prelude No. 3" Chopin; "Naiads at the Spring," Juon; "Waltz in Five Part Time," Tchaikowsky; "Juba Dance," Dett. Reading "Livinski at the Wedding."

9:05 P. M. Talks on correct wearing apparel, for men and women, and suggestions for the home. These articles are furnished by Nast Publications, Vanity Fair, Vogue, and House and Garden.

—for clear and accurate

Reception  
of  
**RADIO**  
Broadcasting

use

**FROST**  
**ONES**

A QUALITY  
ACHIEVEMENT

Your local  
dealer has them



2000 Ohm Set No. 162 <b>\$5.00</b>	3000 Ohm Set No. 163 <b>\$6.00</b>
---	---



**HERBERT H. FROST**  
NATIONAL FACTORY DISTRIBUTORS  
TO THE ELECTRICAL-RADIO JOBBER  
154 W. LAKE ST. CHICAGO, ILL.

November 18, 1922

**Thursday, November 23, 1922**

- 2:35 P. M. Afternoon concert furnished by Lyon & Healy Company, and broadcasted from Lyon & Healy Concert Hall.
- 8:00 P. M. Concert by Birdie Gordon, soprano; James E. Luchansky, tenor; Sallie Menkes, accompanist; Erwin Wallenborn, pianist; Louis W. Hackbarth, trombone.
- Program: Soprano solos, "Gypsy Love Song," Herbert; "Three Little Chestnuts," Page; "Night," Brown. Trombone solos, "In the Gloaming," Harrison "A Dream," Bartlett; "The Rosary," Nevin; "Lassus Trombone," Fillmore; Tenor solos, "Until," Sanderson; "Sunrise and You," Penn; "The Little Irish Girl," Lohr. Piano selections.
- 9:05 P. M. "Twenty Minutes of Good Reading," by Rev. Claude J. Pernin, S. J., Head of Department of English, Loyola University.

**Friday, November 24, 1922**

- 8:00 P. M. Program arranged through the courtesy of Lyon & Healy Concert and Artist Department. Lillian Knowles, contralto; Minna Krokowsky, violinist; Melita Krieg, pianist; and Philip Warner, accompanist.
- Program: Contralto solos, "My Love is a Muleteer," Di Nogero; "Danny Boy," Weatherly; "The Star," Rogers; "I Passed By Your Window," Brahe; "Pleading," Elgar; "How Many a Lonely Caravan," Woodford-Finden. Violin solos, "Andante from Concerto," Mendelssohn; "Minuet," Mozart; "Ave Maria," Schubert-Wilhelmj; "Spanish Dance," Rehfeld; "Scherzo Tarantelle," Wieniawski. Piano solos, "Meditation," Tchaikowsky; "Scherzo," Mendelssohn; "Valse Oubliee," Liszt; "Jubilee Dance," Melita Kreig.
- 9:05 P. M. Reviews of the latest books given by Llewellyn Jones, literary editor of the Chicago Evening Post.
- 11:00 P. M. to 12:00 Midnight—Midnight Show.

**Saturday, November 25, 1922**

- 2:30 P. M. Word picture of football game at Stagg field, University of Chicago, broadcasted from the field of KYW.
- Summaries of all important games played in United States.
- This service is continuous from 2:30 P. M. until the close of all games.

## Screw Machine Products

We solicit your inquiries on accurate screw machine products in either steel or brass. A permanent and separate division is maintained. We are serving some of the largest consumers in this line with perfect satisfaction and our enlarged capacity will enable us to serve you.

ADDRESS:

## Screw Machine Division

The Oliver Typewriter Company  
Works: Woodstock, Illinois

## Chicago Artists at Station KYW



Left to Right—Fontella Jewett, soprano; John C. Minnema, director Chicago Heights Women's Club Chorus; Hildred Hanson Hostetter, soprano.

- 8:00 P. M. Musical by Bernice Ozmun, soprano; Jane Farren, reader; Sallie Menkes, accompanist; Ethel Dale, pianist.
- Program: Piano solos, "Troubled Dreams," Schumann; "To a Water Lily," MacDowell; "Hark, Hark the Lark," Schubert-Liszt; "Sleigh Ride," Tschai-kowsky. Soprano solos, "Dawn in the Desert," Ross; "Homing," Del Riego; "Swing Low Sweet Chariot," Burleigh. Readings, "A Call in the Night," Harbour; "Now Ain't Dot So," "Freckled Faced Little Girl;" "Myself and Me," Colan.
- Sunday, November 26, 1922**
- 3:30 P. M. Radio Chapel Services conducted by the Rev. Frederic S. Fleming, S. T. B. of Episcopal Church of Atonement, Chicago, Illinois.

### KYW'S DAILY BROADCASTING SCHEDULE

- 9:25 P. M. Opening Market Quotations, Chicago Board of Trade.
- 10:00 A. M. Market quotations, Chicago Board of Trade. Quotations every half hour thereafter until 1:00 P. M.
- 1:20 P. M. Closing market quotations, Chicago Board of Trade.
- 2:15 P. M. News and Market Reports.
- 2:30 P. M. Closing Quotations, Chicago Stock Exchange.
- 3:00 P. M. News and Sports.
- 3:30 P. M. News and Sports (Except Mondays, Wednesdays, and Fridays).
- 4:00 P. M. News and Sports.
- 4:15 P. M. News, Market and Stock Reports.
- 4:30 P. M. News and Sports.
- 5:00 P. M. News and Sports.

- 6:30 P. M. News, Financial and Final Market, and Sport Summary. "Topics of the Day" furnished by Pathe Exchange—Mondays only.
- 6:50 P. M. Children's Bedtime Stories.
- 8:00 P. M. Musical Program.
- 9:00 P. M. News and Sports.
- 9:05 P. M. Special Features announced by Radiophone.

News of the business world furnished at 6:30 P. M. by the Chicago Journal of Commerce.

News, Sports and Children's Bedtime Stories, furnished by the Chicago Evening American.

(KOV Program Continued from page 7)

Wednesday, November 22, 1922

- 10:00 P. M. Program to be given by Students from the Majorie Keil Benton Studio, Pittsburgh. Numbers will be sung by Ruth Oberheim, Emma Schultz, Janet Thoma, soprano; Miriam Hickler, Elsie Larson, Erma Hartman and Kathleen French, contraltos; Raleigh Naughton, tenor. The program to be given under the personal direction of Mrs Benton. Alvin J. Adams, accompanist.

Program numbers: Quartet: "I Hear You Calling Me" by Marshall, Misses Thoma, Schultz, French and Hartman. "Twilight," by Glen, and "Wake Up," by Phillips, sung by Miss Oberheim; "A Red, red Rose," by Hastings, sung by Miss Hickler; Duet: "Carmena," by Wilson, sung by Miss Oberheim and Miss Larson; "To You," by Speaks; and "The Summer Wind," by Bischoff, sung by Miss Schultz; "Kashimiri Song," and "Temple Bells," by Woodford-Finden, sung by Mr. Naughton, "Danny Boy," by Weatherly, sung by Miss Larson; Trio: "Husheen," by Needham, sung by Misses Thoma, French and Hartman.

Friday, November 24, 1922

- 10:00 P. M. Program to be given by Ruby Dunn McCurdy, contralto, of Pittsburgh, Mr. Earle C. McCurdy, accompanist.

Mrs. McCurdy came to Pittsburgh a little more than a year ago from Maine where she had taken active part in concert work through New England. She has been a student under Edward Randall Myer and Esther Plumb, both well-known teachers of voice and was for a time teacher of voice and cello in the Quincy (Ills.) College of Music. Her first professional engagement, when quite young was with Edward Johnson, of the Metropolitan and Chicago Opera Company, who will be remembered as one of New England's foremost oratorio singers before he went to Italy to study for opera and where he later made his debut. Mrs. McCurdy is now contralto soloist in the Dormont Presbyterian church Pittsburgh, and a student in the studio of Mrs. James Stephen Martin.

Soprano solos: "Love is the Wind," by MacFadyen; "Top o' the Morning," by Mana-Zucca; Aria—"Connais-tu le pays," (Know'st Thou the Land) by Thomas, from "Mignon;" "Leetle Bateese," by O'Hara, poem by William Drummond; "I Know," by Spross, and "Annie Laurie," arranged by Liza Lehman. Midway in this program Mrs. Bertha B. Davis, will present the One-Act Play, "Tatters," as an Interlude to the numbers to be sung by Mrs. McCurdy. "Tatters" was written by Richard Burton, and was published in "The Drama" for March 1922, having been sponsored by the Drama League of America.

1c. Paid.  
East Pittsburgh, Pa.  
Permit No. 102.

Nov. 18, 1922

W. S. BEDELL JR.  
143 W. MITCHELL ST.  
CLAIRTON PA. 1293

**Important**

**RADIO BROADCASTING NEWS**

**Weekly Radio Programs**

Return Postage Guaranteed by  
**RADIO BROADCASTING NEWS**  
1205 Keenan Building Pittsburgh, Pa.